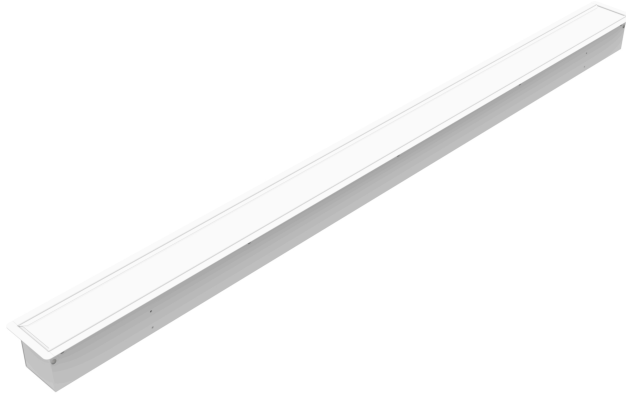


# BLRE

LED Recessed Strip



Project	
Nomenclature	
Type	Date
Approval	
Notes	

The BLRE is a recessed LED strip fixture. It is ideal for indoor use, where energy-efficiency, performance and ease of maintenance is essential. Its narrow recessed design makes it ideal for interior perimeter lighting

## Luminaire Summary

### Features

- Operating temperature ranges available from -20C to 25C
- Standard 0 - 10V dimming
- Available in 2700K, 3000K, 3500K, 4000K, 5000K and 6500K
- Lumen packages are available ranging from 2FT 1L (1000lm) to 8FT 8L (8000lm)

### Approvals

- ETL certified to UL Canada and United States standards
- Made with UL Listed components

### Mounting

- Holes provided for chain or hanger, and wire mounting support for T-Bar ceilings
- Drywall mud and tape
- Drywall clamp

### Construction

- Manufactured in Ontario, Canada
- Shallow fixture design for easy installation
- Powder-coated in high-reflectance gloss white
- Access panel provided for easy wiring
- Cold-rolled steel parts are precision bent for added strength and rigidity

### Electrical

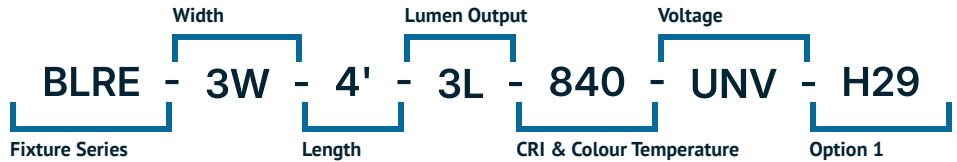
- Available in 120-277V, 120-347V, 347V and 480V

### Options

- Wireless Controls Available
- 90 and 95+ CRI Options Available
- 120-347V(UN3) Available

### Ordering Information

Fill in the fields below with your product selections. If you need help with this section, [contact your local sales professional](#).



1	2	3	4	5	6	7
BLRE						

Series	Width	Size	Lumen Output		CRI	Colour Temp	Voltage
BLRE	3W - 3" Wide 6W - 6" Wide	2' - 2' Length	2FT 1L	(1000lm)	8 - 80 CRI	27 - 2700K	UNV - 120-
		4' - 4' Length	2FT 2L	(2000lm)	9 - 90 CRI	30 - 3000K	277V
	8' - 8' Length	4FT 2L	(2000lm)	1 - 95+ CRI	35 - 3500K	UN3 - 120-	
		4FT 3L	(3000lm)		40 - 4000K	347V	
	4FT 4L	(4000lm)	50 - 5000K	347 - 347V			
	8FT 4L	(4000lm)	65 - 6500K	480 - 480V			
	8FT 6L	(6000lm)					
	8FT 8L	(8000lm)					

8						
---	--	--	--	--	--	--

### Options

#### Lenses

BLANK	Frosted Acrylic
L**	Other Options Available*

#### Dimming

B11	0-10V Dimming Leads
B12	Line Voltage Dimming
B27	Dim-to-off Driver
B**	Other Options Available*

#### Controls

WC10*	Encelium Wireless Controls
WC18*	NX Wireless Controls
WC19*	Avi-on Wireless Controls
WC22*	JDRF Wireless Controls

#### Motion Sensors

WX15	Internal Dimming Low Voltage Microwave Sensor
WC20	Leviton Low-Voltage Sensor
W**	Other Options Available*

#### Emergency Driver

B17	UL924 10W Battery Back-up
F8	UL924 Emergency Relay

#### Finish

BLANK	Standard Matte White
C5	Matte Black
CUSTOM*	Custom Colour Choice

#### Packaging

BLANK	Individually Boxed on Pallets
P0	Bulk Packaging
P**	Other Options Available*

#### Mounting


BLANK	Recessed T-Bar Flange
H14	Integrated Drywall Flange
H25	Drywall Flange with Drywall Clamps
H26	Drywall Mud and Tape Flange


#### Warranty

CL7	10-Year Comprehensive Warranty Upgrade
-----	--

### Documentation and Resources





All files and resources are available on our website for download. Files and resources are also embedded as links in this document, listed below. Additional files may be available upon request. Please contact your local sales agent [here](#) or contact [sales@bjtake.com](mailto:sales@bjtake.com) for more information.

 [BLRE-3W - Installation Instructions](#)

 [BLRE-3W-4'3L-840-H29](#)

### Certifications and Listings

Certifications that apply to this fixture and its possible configurations are listed here. More information available upon request.

Icon	Description
	Wireless Controls Available
	ETL Listed
	90 and 95+ CRI Options Available
	120-347V(UN3) Available

### Usage Applications

This fixture can be used in a variety of applications, and is ideal for the following:

Usage Application
Hospitals
Offices
Schools

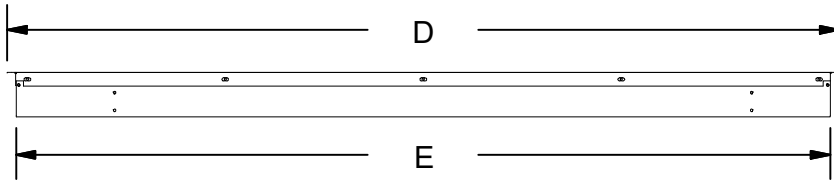
### Warranty Statement

BJ Take products are tested and/or inspected prior to being packaged for shipment and are guaranteed from the day the product is shipped for a period of ten-year LED chip warranty and a five-year comprehensive component warranty. This can be upgraded to a ten-year comprehensive warranty on request.

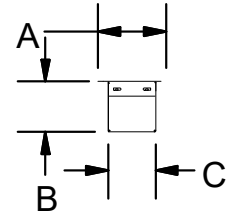
### Important Information

This page of dimensions pertains specifically to the **3 inch wide** packages ranging from 4 foot to 8 foot. Continue on to the next page for additional diagrams and dimensions.

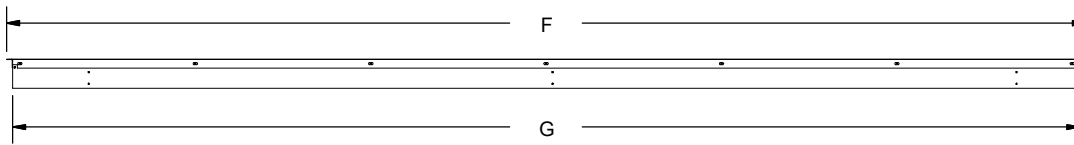
### BLRE 4' 3"W, Side View



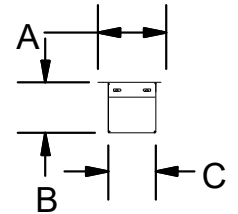
### 4' 3"W, End View



### BLRE 8' 3"W, Side View



### 4' 3"W, End View



### BLRE, 3W Dimensions

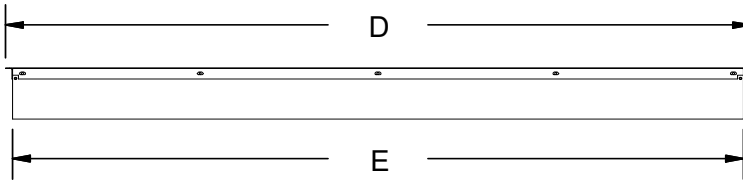
Fixture Option	A	B	C	D	E	F	G
Blank - Recessed T-Bar Flange	3.38	2.50	2.38	47.00	46.00	93.00	92.00
H14 - Integrated Drywall Flange	3.38	2.50	2.38	47.00	46.00	93.00	92.00
H26 - Drywall Mud and Tape Flange	3.62	2.50	2.38	47.25	46.00	93.25	92.00

- \* Drawings aren't to scale
- \* Standard tolerances apply
- \* Specifications may change without notice

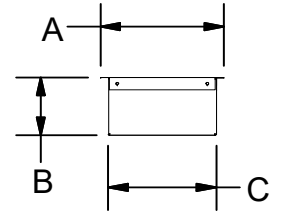
### Important Information

This page of dimensions pertains specifically to the **6 inch wide** packages ranging from 4 foot to 8 foot. Continue on to the next page for additional diagrams and dimensions.

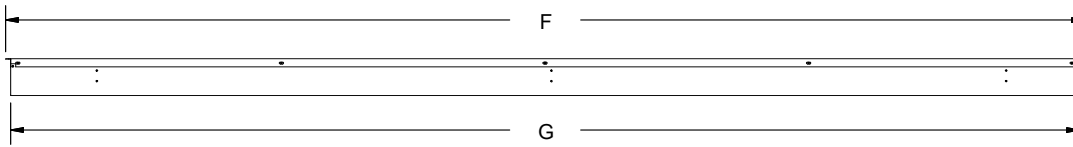
### BLRE 4' 3"W, Side View



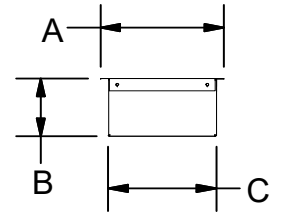
### 4' 3"W, End View



### BLRE 8' 3"W, Side View



### 4' 3"W, End View



### BLRE, 3W Dimensions

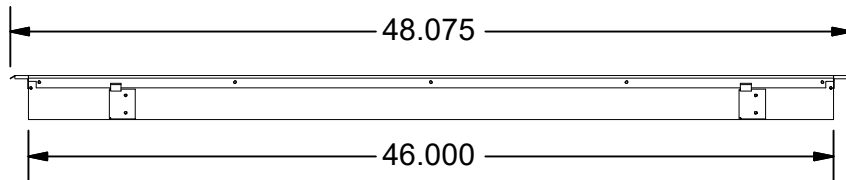
Fixture Option	A	B	C	D	E	F	G
Blank - Recessed T-Bar Flange	6.88	3.50	6.00	46.88	46.00	94.88	94.00
H14 - Integrated Drywall Flange	6.88	3.50	6.00	46.88	46.00	94.88	94.00
H26 - Drywall Mud and Tape Flange	7.12	3.50	6.00	47.12	46.00	95.12	94.00

- \* Drawings aren't to scale
- \* Standard tolerances apply
- \* Specifications may change without notice

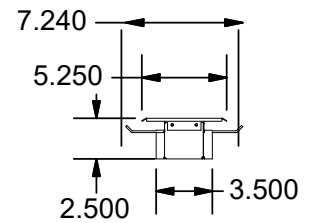
### Important Information

This page of dimensions pertains specifically to the **H25 (Drywall Flange with Drywall Clamps)** packages ranging from 4 foot to 8 foot.

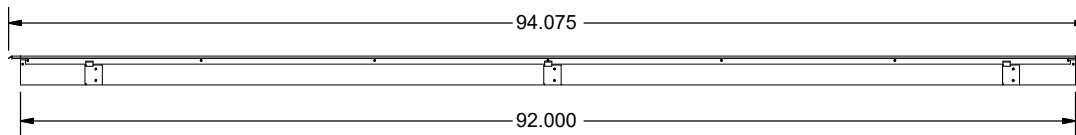
#### BLRE 4' 3"W H25, Side View



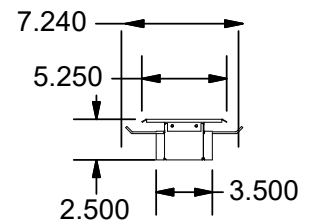
#### 4' 3"W H25 End View



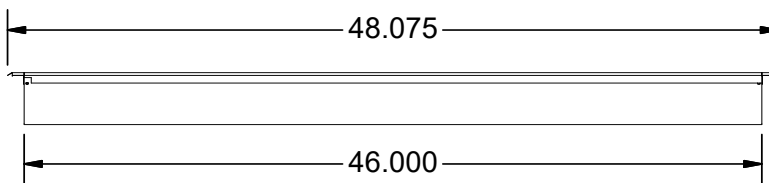
#### BLRE 8' 3"W H25, Side View



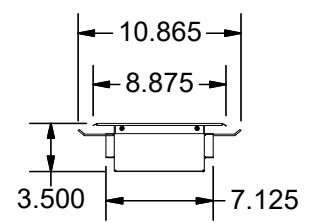
#### 4' 3"W H25, End View



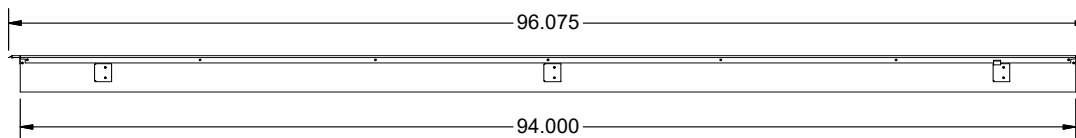
#### BLRE 4' 6"W H25, Side View



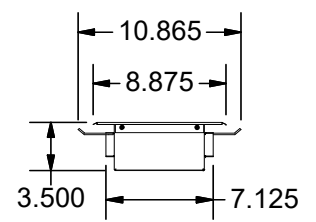
#### 4' 6"W H25, End View



#### BLRE 8' 6"W H25, Side View



#### 4' 6"W H25, End View



- \* Drawings aren't to scale
- \* Standard tolerances apply
- \* Specifications may change without notice

### Important Information

Below you will find the available wattage charts for the BLRE. For any required specifications that are not listed here, please contact our sales team at [sales@bjtake.com](mailto:sales@bjtake.com) to request any additional information.

### BLRE, 2' Wattage

Length	Lumen Output	Fixture Wattage
2'	1.00	10.60
2'	2.00	22.70

### BLRE, 4' Wattage

Length	Lumen Output	Fixture Wattage
4'	2.00	21.20
4'	3.00	30.30
4'	4.00	42.70

### BLRE, 8' Wattage

Length	Lumen Output	Fixture Wattage
8'	4.00	38.10
8'	6.00	60.70
8'	8.00	85.50

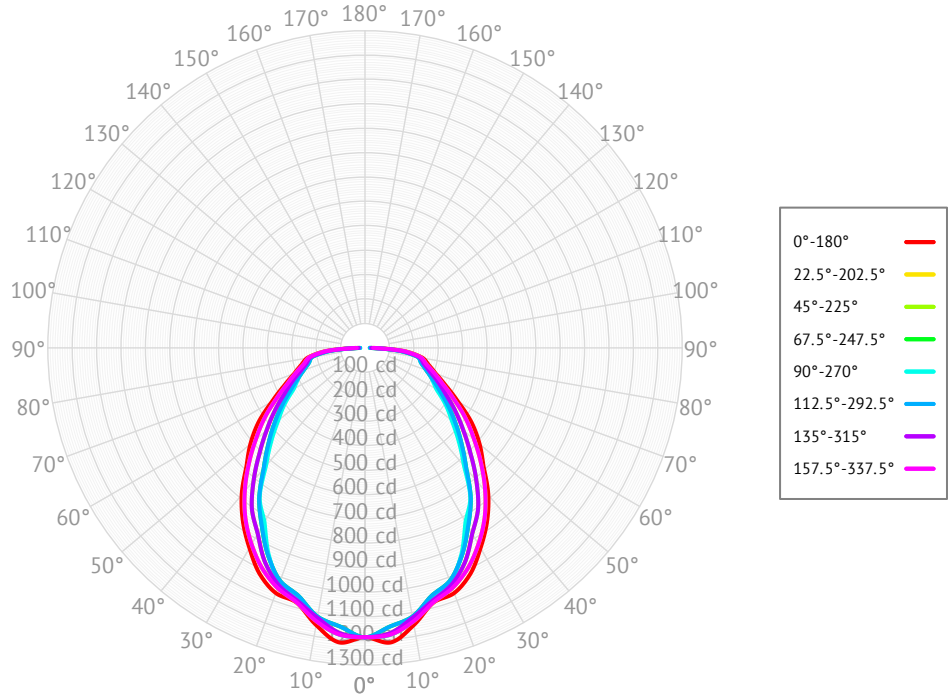
### BLRE, Light Loss Factor (LLF)

CCT	Output%
2700K	92.95
3000K	95.51
3500K	96.80
4000K	100.00
5000K	101.28
90CRI	84.72

BLRE-3W-4FT-3L-840-H29

**Cone of Light**

Mtg Height	Light Level	Beam Diameter
6.0 ft	32.9 fc	14.5 ft
8.0 ft	18.5 fc	19.4 ft
10.0 ft	11.9 fc	24.2 ft
12.0 ft	8.2 fc	29.1 ft
14.0 ft	6.1 fc	33.9 ft
16.0 ft	4.6 fc	38.7 ft



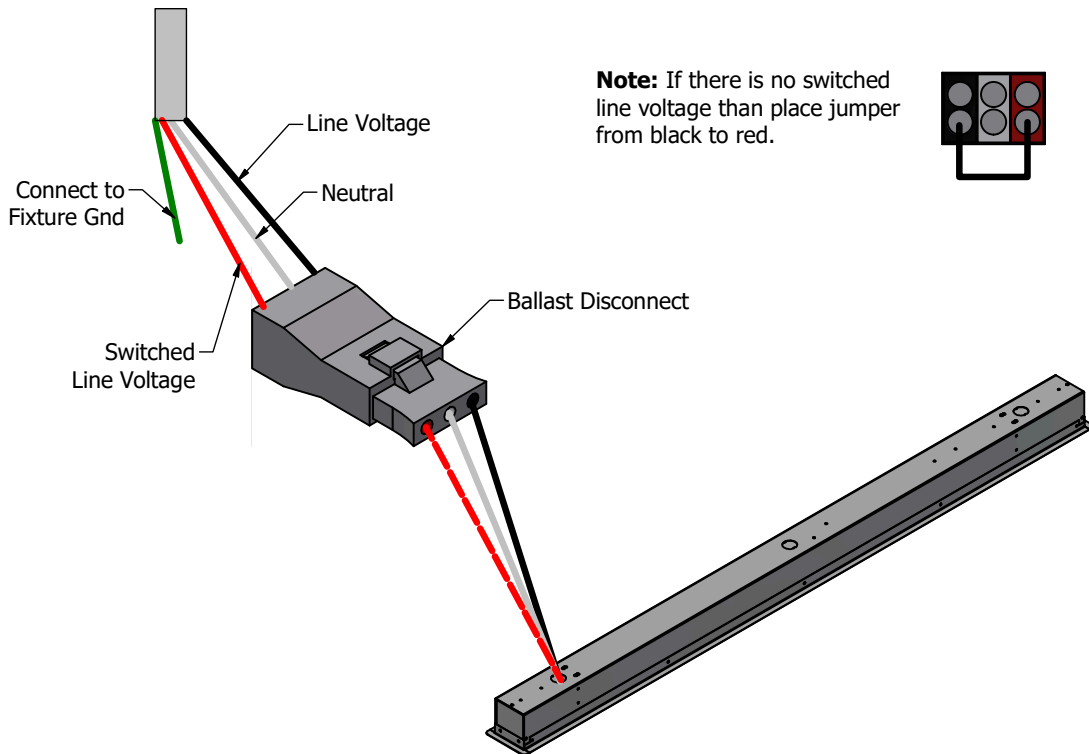
Based on BLRE-3W-4'-3L-840-H29, ie. (BLRE, 3in Wide, 4 foot, 3000lm, 80 CRI, 4000K, w/ H29)



### Emergency Battery Plan - 10W

Emergency Lighting	Solution System Components	System Operation
Option Code 'B17' - UL 924 listed components that are factory installed in the luminaire	UL 924 listed 10-watt battery integral to the luminaire	Loss of normal power is detected by the B17 emergency light solution and the power supply is switched automatically to the 10-watt integral battery pack which powers the emergency LED lighting driver.
	UL 924 listed LED emergency lighting driver integral to the luminaire	The battery pack and emergency LED driver are UL 924 certified to provide a minimum of 90-minutes of emergency lighting.
	Wiring options for both switched and unswitched emergency lighting	

### Emergency Lighting Wiring



### Important Information

More information on emergency lighting options and configurations available on request.